



Xede Wiring Diagram

1994-1996 Subaru WRX & Liberty RS Turbo

Wiring Details:

Note: Connectors are drawn as seen from the wire side.

<i>XEDE</i> Configuration:	S
<i>XEDE</i> Revisions:	All
<i>XEDE</i> Harness:	XH-WBG (Generic Harness)
Special Notes / Information:	See Diagram Over Page

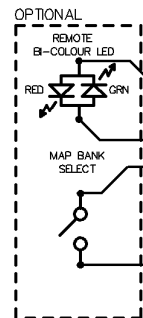
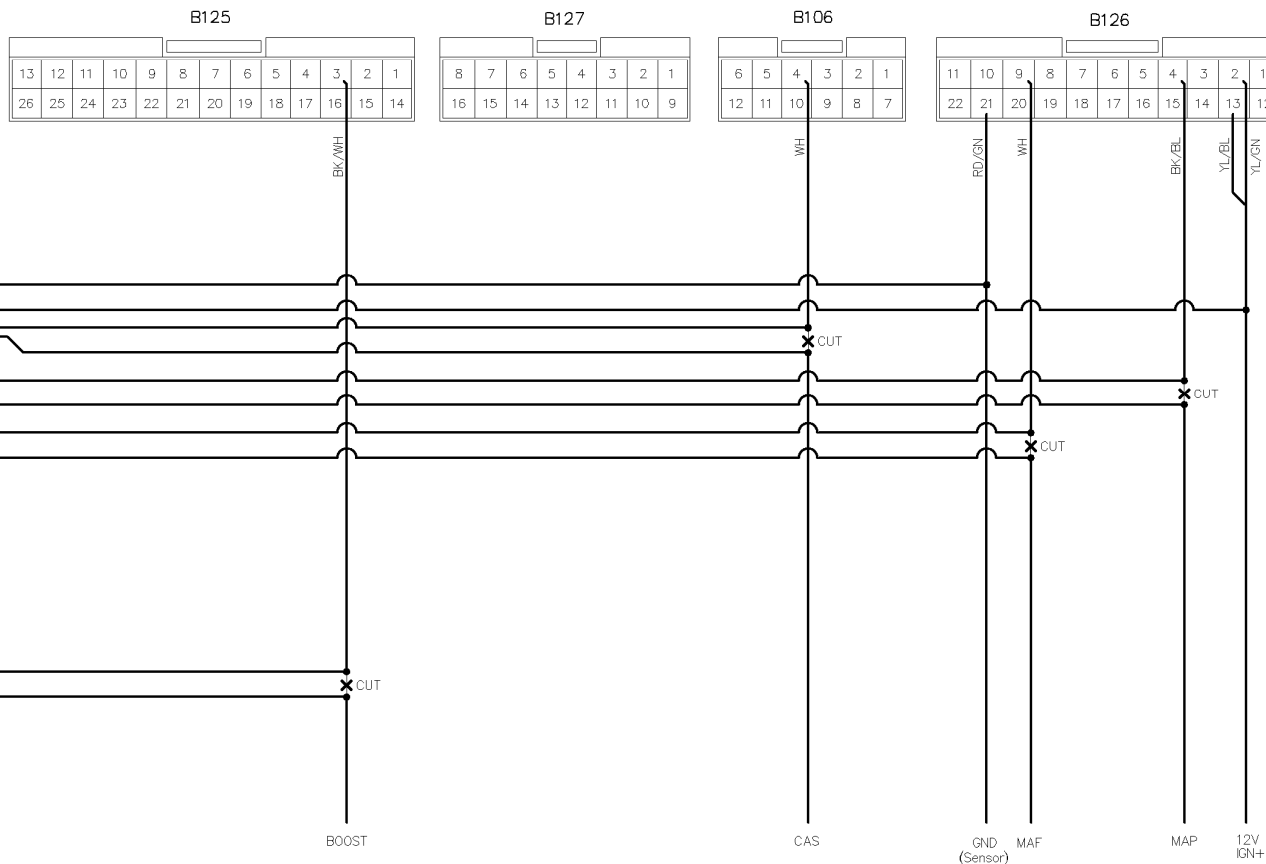
ECU Connector View from back of connectors (wire view)

* ONE OR BOTH OF THE CHASSIS GROUNDS MUST BE CONNECTED IF ANY OF THE FOLLOWING XEDE FEATURES ARE BEING USED:

- WATER SPRAY
- BOOST CONTROL
- AUXILIARY INJECTOR DRIVE

** Red wire in 3 core shielded cable. DO NOT terminate the shield (uninsulated) wire in the 3 core cable

NOTE: CRANK and CAM sometimes swapped on jap models
PIN 4 (B106) may swap with PIN 1 (B127)
Select the white wire (CAS)



View from back of connectors
(wire view)